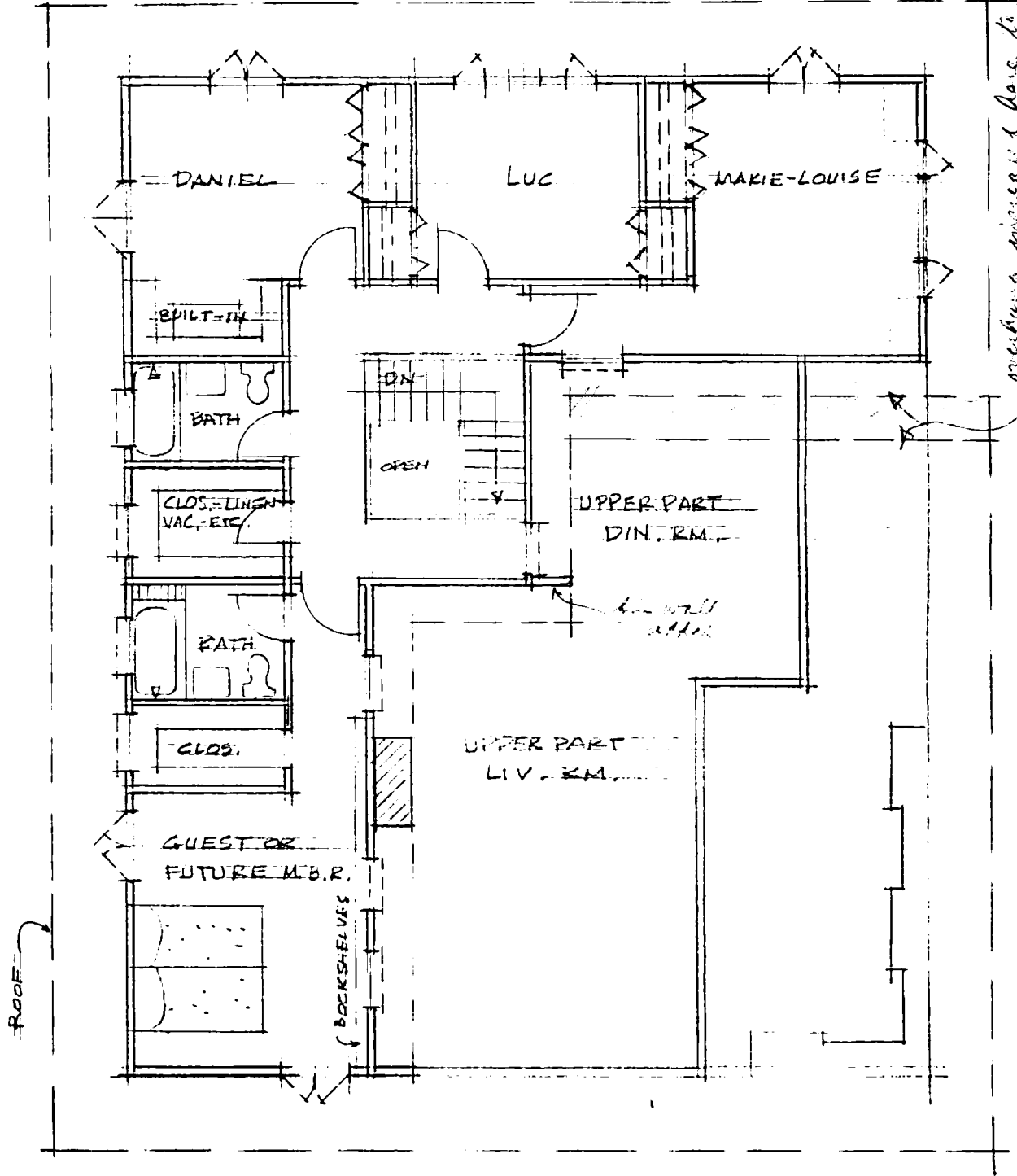
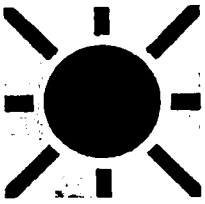


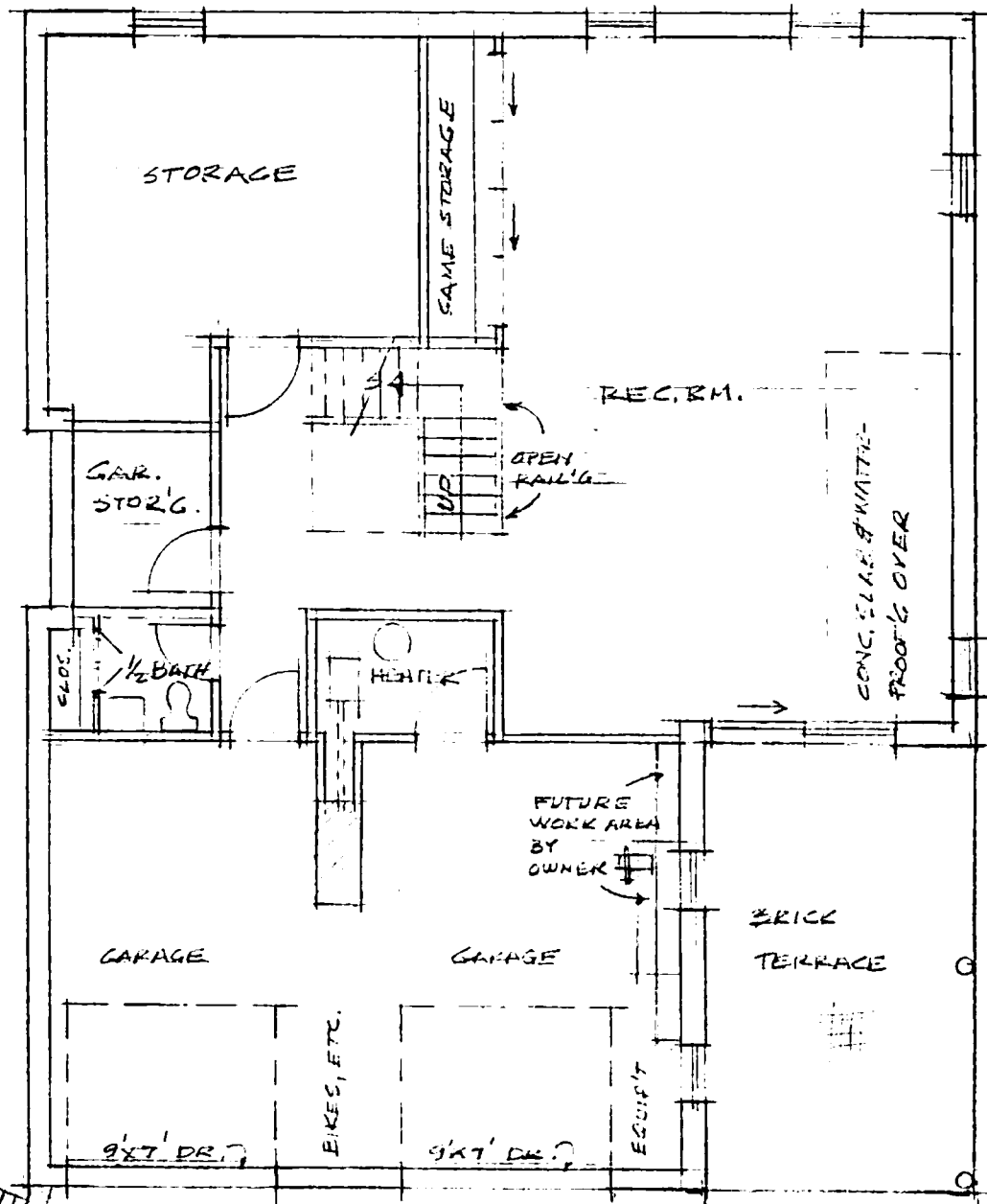
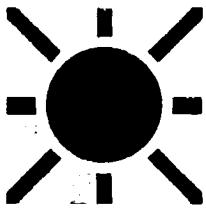
CRÉMIER RES. - 1ST FL. PLAN - 1/8" = 1'-0"
2 & 3 NOV '87 - L.J.C.



CRÉMIER RES. - 2ND FL. PLAN - 1/8" = 1'-0"

3 NOV '89 L.J.C.

P. 3



10' windows added here

CRÉMER RES. - BSMT. PLAN - 1/8" = 1'-0"
4 NOV '87

P. 4